



CITY OF SUNNYVALE NOTICE OF PUBLIC HEARING (REVISED HEARING SCHEDULE)

Planning Commission Hearing
Monday, June 26, 2017
7:00 p.m.

City Council Hearing
Tuesday, July 25, 2017
7:00 p.m.

Council Chambers, City Hall, 456 W. Olive Avenue, Sunnyvale, CA

PROJECT INFORMATION:

FILE #: 2016-7293

Location: 1008 E. El Camino Real (APN 313-03-011) and 1314-1320 Poplar Ave. (APN 313-03-013)

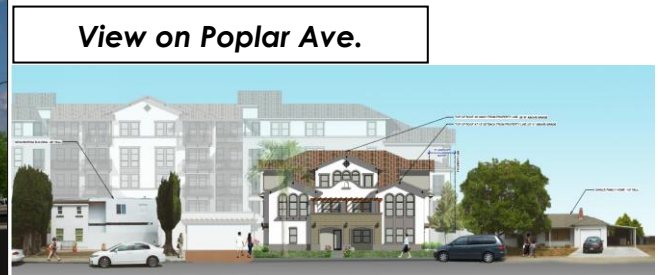
Proposed Project: **Rezone:** Introduction of an Ordinance to rezone the property at 1314-1320 Poplar Ave. (APN 313-03-013) from R-1/ECR (Low Density Residential/Precise Plan for El Camino Real) to C-2/ECR (Highway Business Commercial/Precise Plan for El Camino Real);

Special Development Permit: Construct 108 residential units (rental apartment complex) on a 2.05-acre site, where 20% of units will be affordable to very low income households. The complex will consist of one five-story building facing El Camino Real (four stories above ground floor amenities and parking plus one underground level of parking) and one three-story building facing Poplar Ave. The project includes deviation requests from the required minimum distance between buildings on the same lot, maximum building height, minimum parking spaces and maximum lot coverage. The project site comprises a closed mobile home park (Conversion Impact Report certified and closure approved in January 2016) and a duplex property; and

Vesting Tentative Parcel Map: Combine two lots into one lot.

Issues Land use and potential visual and privacy impacts

Renderings



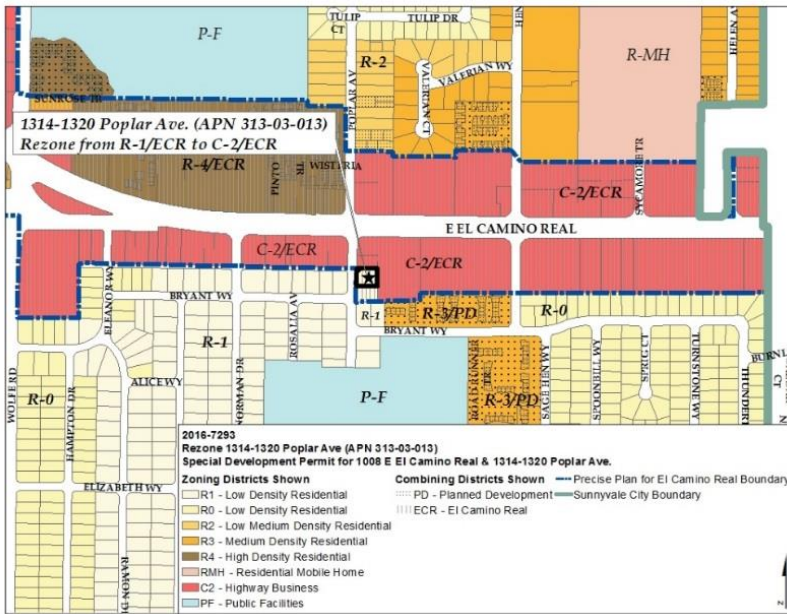
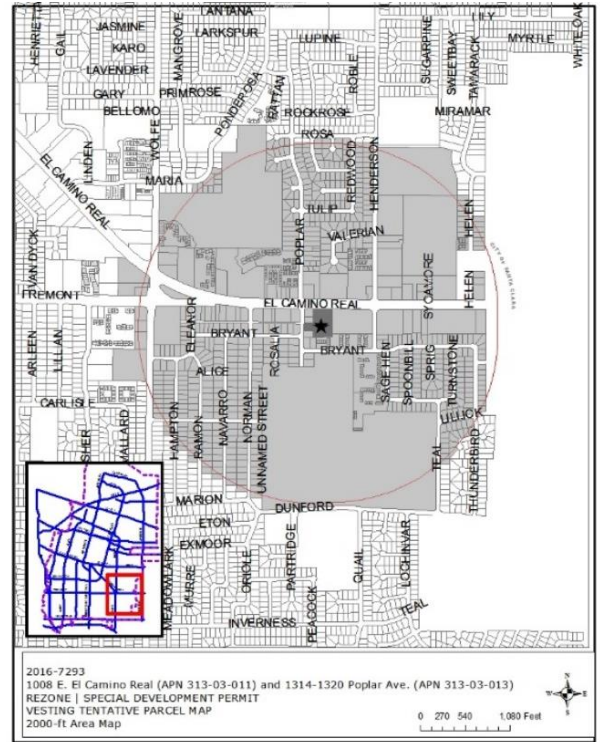
Applicant/ Owner: St. Anton Communities / Sunnyvale Park LLC; Alhambra Apartments LP

Environment -al Review: Mitigated Negative Declaration

Staff Contact: Rosemarie Zulueta, (408) 730-7437, rzulueta@sunnyvale.ca.gov

“see reverse side for notice”

Noticing and Vicinity Map:



Rezoning Map

Information and Opportunities to Comment

<p>Public Hearing</p>	<p>Final action on this matter may be taken at this hearing. If you challenge the action taken in court, you may be limited to raising only those issues you or someone else raised and the public hearing described in this notice, or in written correspondence delivered to the Planning Division, at, or prior to, the public hearing.</p>
<p>Project Plans and Information</p>	<p>Project information and environmental documentation is available for review in the Planning Division at City Hall between the hours of 8:00 a.m. - 5:00 p.m. Monday through Friday.</p>
<p>Staff Report</p>	<p>Reports are available the Friday before the public hearing. Please contact the Planning Division Answer point at (408) 730-7440 to confirm availability of the report. Copies are available at the following locations: One-Stop Counter in City Hall, Reference Desk of the Sunnyvale Library and the City's Website after 5:00 p.m. at www.sunnyvale.ca.gov</p>
<p>Accommodations</p>	<p>Pursuant to the Americans with Disabilities Act, the City of Sunnyvale will make reasonable efforts to accommodate persons with qualified disabilities. If you require special accommodation, please contact the Planning Division at (408) 730-7440 at least five days in advance of this hearing.</p>